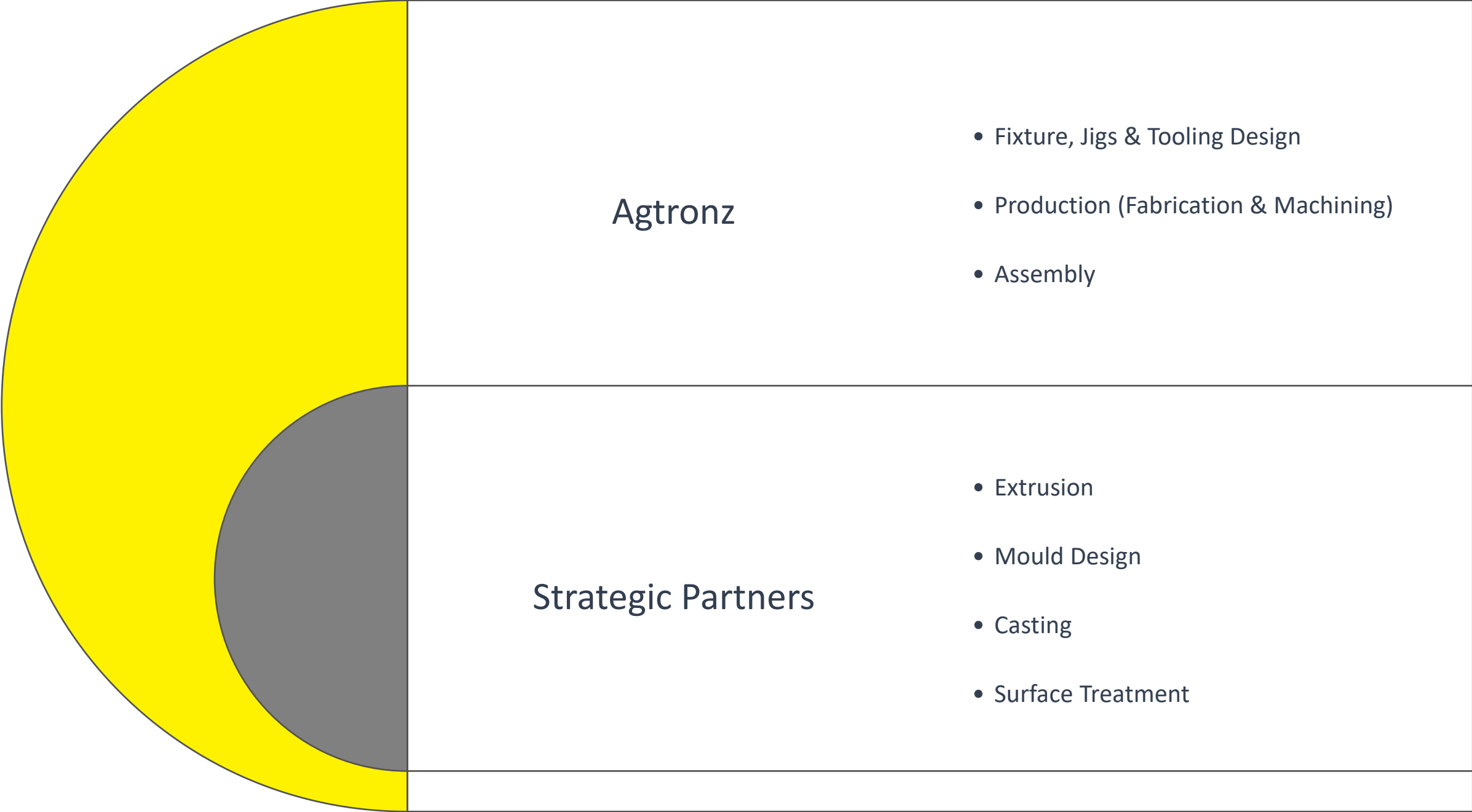


# AGTRONZ PTE. LTD.

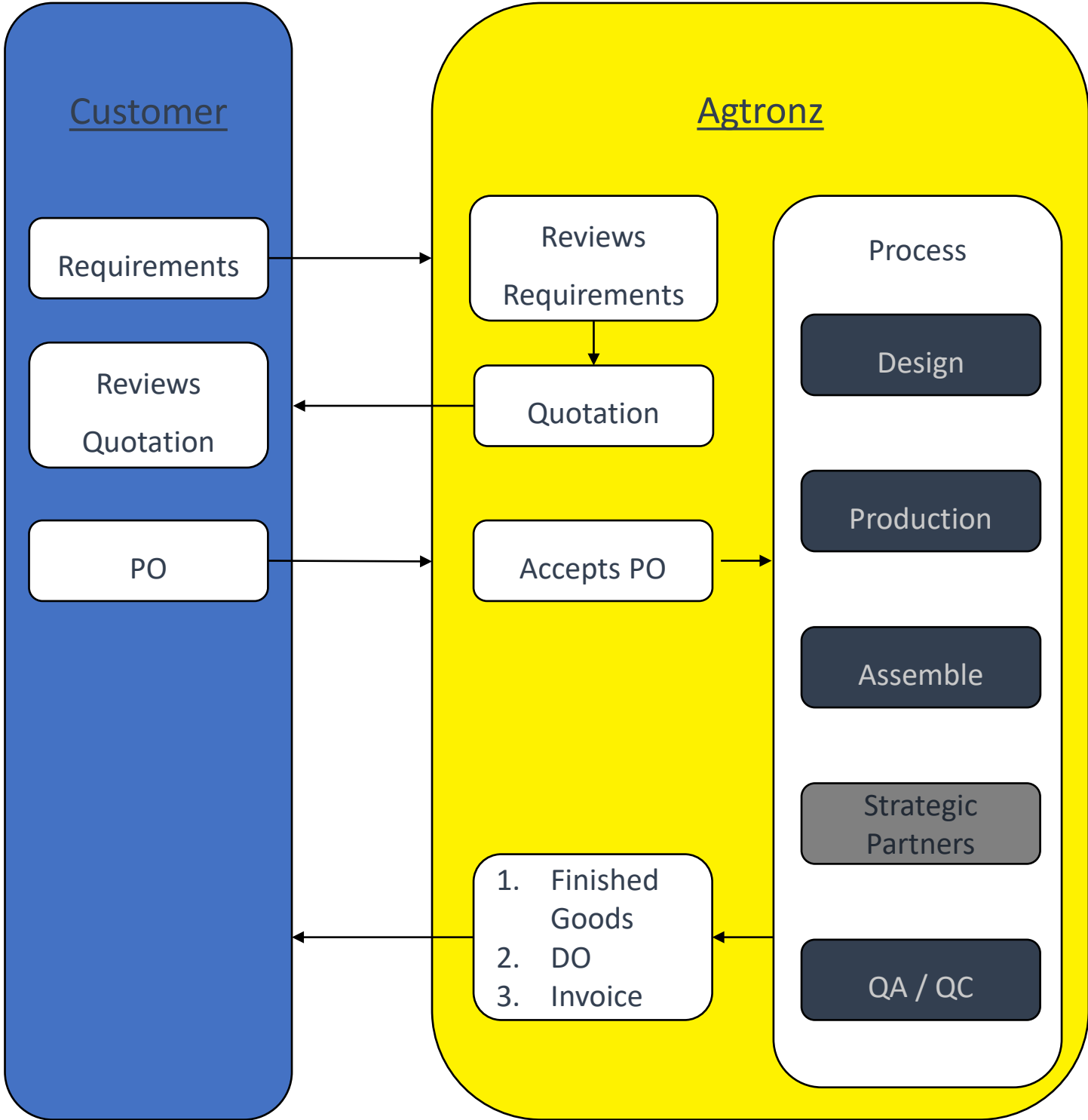
Excellence in Engineering, Precision in Manufacturing

# Our Story and Expertise



# Streamlining Efficiency: Our Operations

We streamline our processes with technology and equipment to deliver high-quality products efficiently. Our competent team plans and schedules production optimally, resulting in on-time delivery and keeping costs low for you.



## Quality Policy

Agtronz Pte. Ltd. is committed to delivering high-quality products and services that meet or exceed our customers' expectations. Our goal is to satisfy our customers' requirements by maintaining an efficient and effective operation, providing quality products and services, and striving towards sustainable growth and development. We are dedicated to continually improving our quality management systems, complying with all applicable requirements.

## Quality Objectives

To ensure our commitment to customer satisfaction, we have set the following quantitative objectives:

1. Achieving 100% committed on-time-delivery for all products and services provided.
2. Ensuring less than 3 customer complaints are received per year.
3. Limiting delivery of products and services requiring rework to less than 5% per delivery.

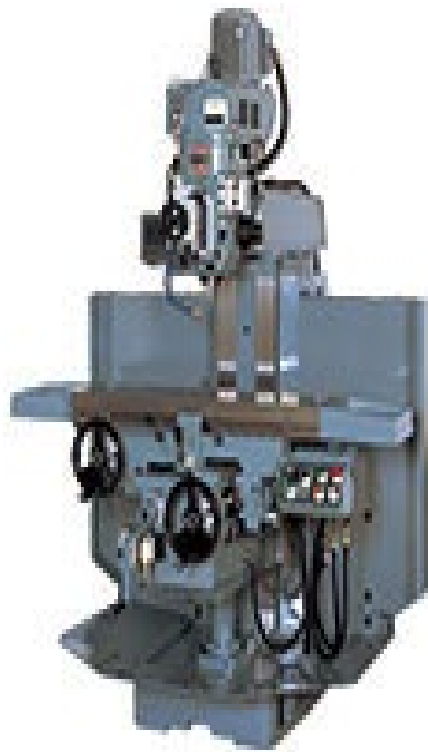
# Machines



Kasuga Machining Center	2 units V50	1 unit V70
X / Y / Z (mm)	510 / 430 / 460	700 / 430 / 460

Fanuc Robodrill	α-DiA5
X / Y / Z (mm)	700 / 400 / 330

# Machines



Shizuoka Milling	VHR-SD
X / Y / Z (mm)	820 / 300 / 450

Kent Surface Grinding	KGS-250AHD
X / Y (mm)	203 / 457

Kent Surface Grinding	KGS-616S
X / Y (mm)	152 / 406

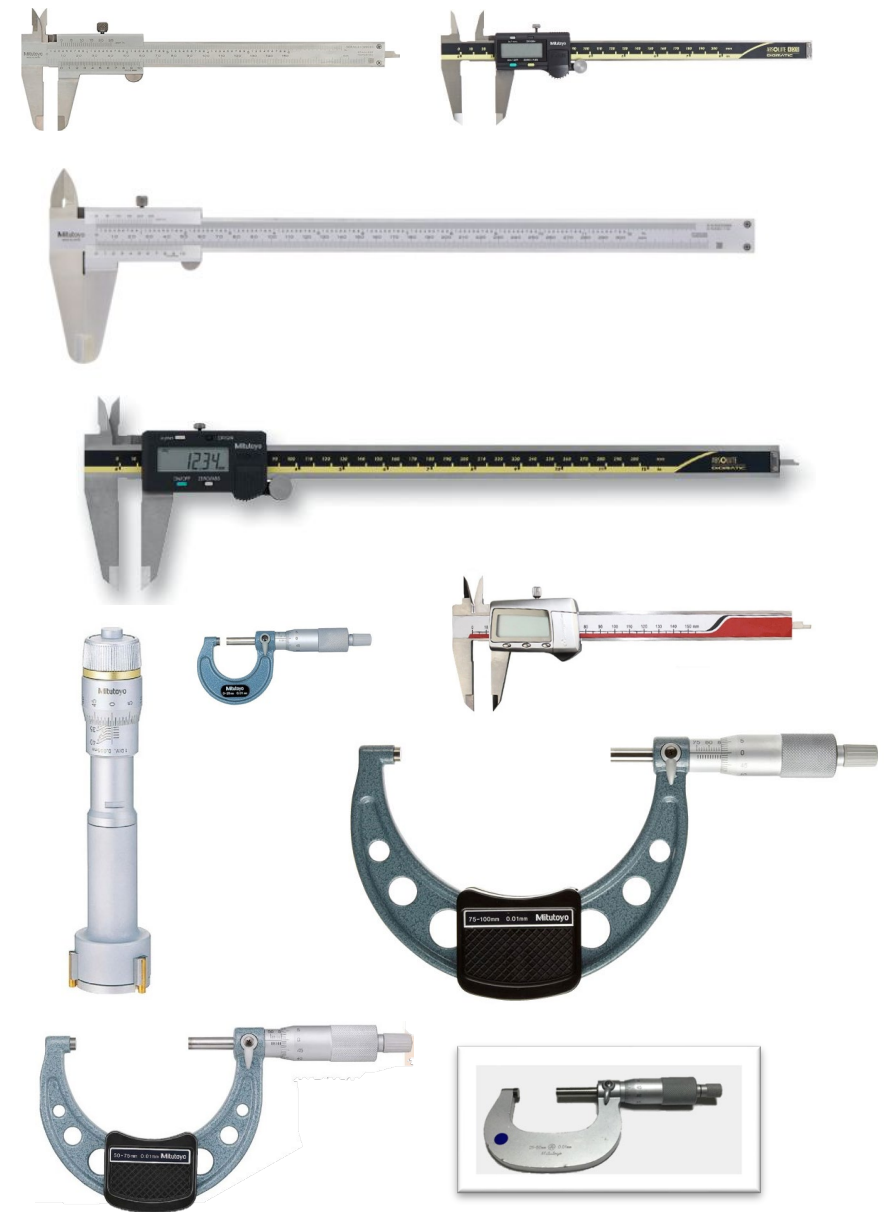
# Measurement Equipment



<b>Hemel CMM</b>	<b>216-102</b>
X / Y / Z (mm)	406 / 508 / 356



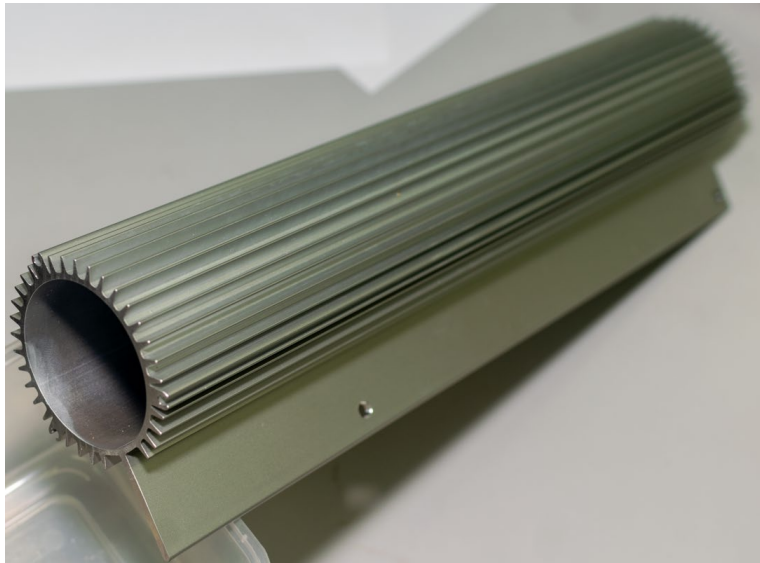
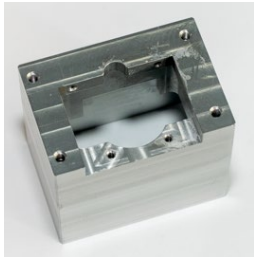
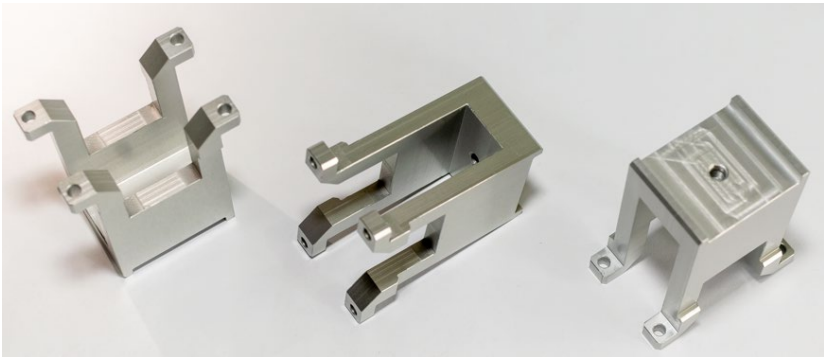
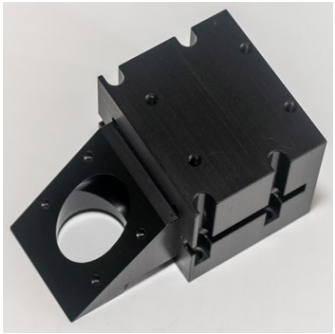
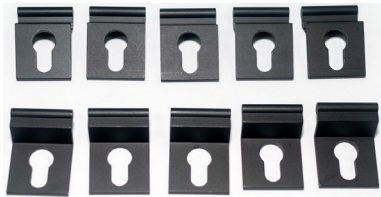
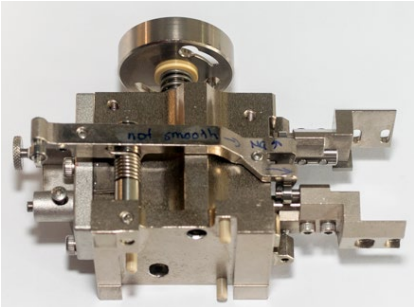
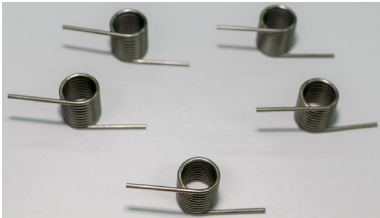
<b>TESA Height Gauge</b>	<b>00730052</b>	<b>599-1013</b>
X (mm)	600	300



**Calliper, Gauges, Holtest**



# Products (Production)

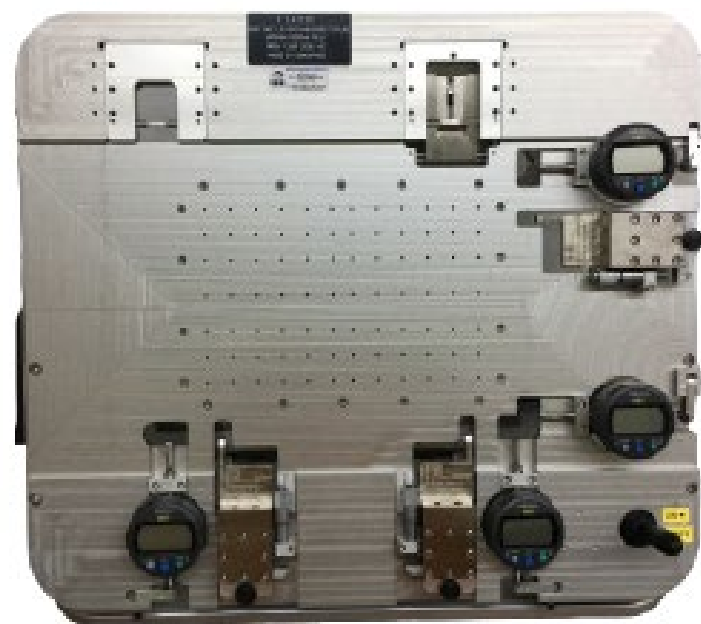




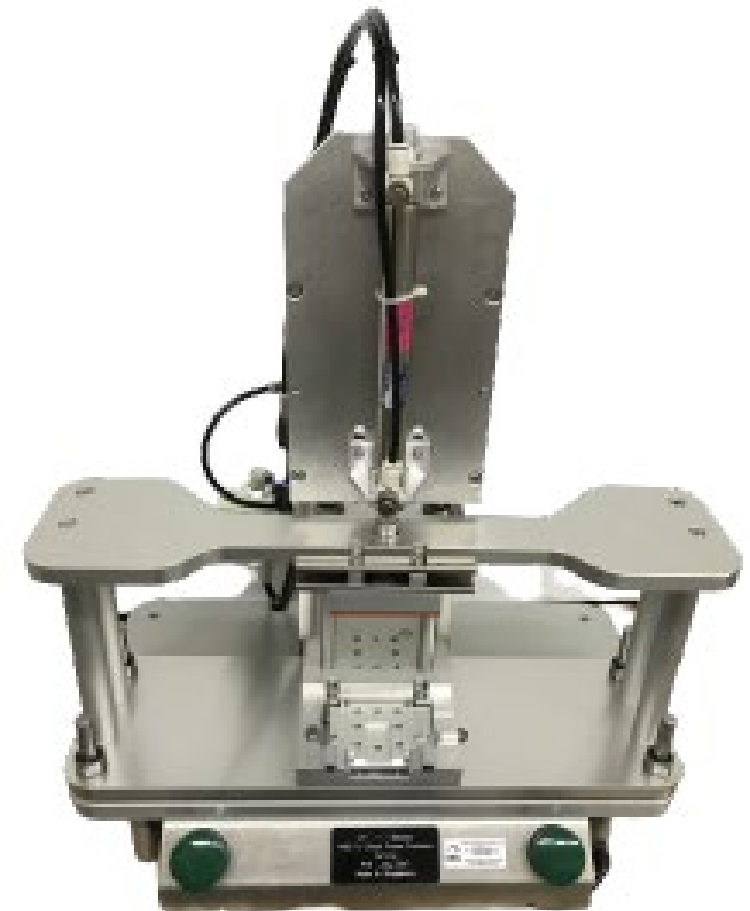
## Products (Assembly Fixture)



Press jig with customised soft material presser block.



Assembly with measurement fixture. This is used to assemble the white background foam onto the printer cover. After assembling, operator can do a quick check on the dimension.

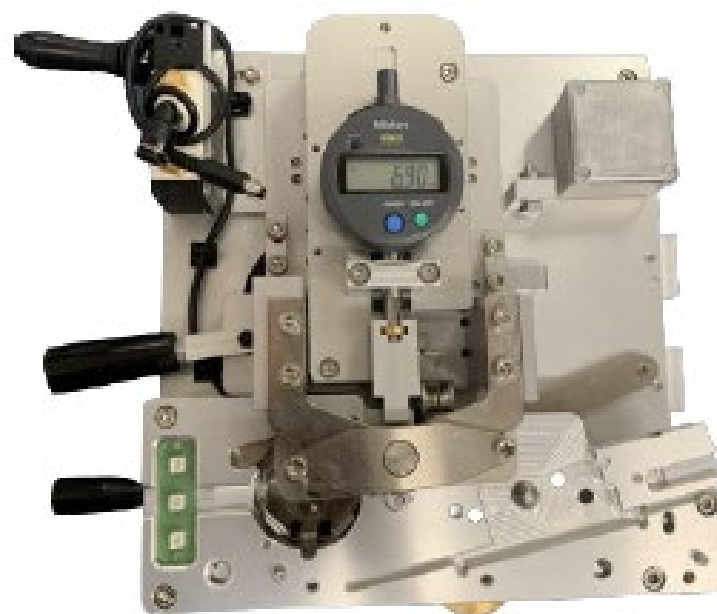


Used to assemble glass to PCB.

## Products (Assembly Fixture)



Pneumatic press to press plastic gear into metal shaft.



Fixture is used to assemble the belt to bracket of a printer.

Step 1: Drop the motor and then the pre-assembled bracket with the belt into the nest.

Step 2: Plug in the connector to PCB for power to turn on the motor.

Step 3: Tighten screw once the belt achieved the desired tension.



After assembling the screw, the bracket will be placed into this verification tool to verify the tension value.

## Products (Semi-Automation)



The machine on the left has a auto-peeler, paster, presser and dressing function which is designed to paste a protective film onto a printer flatbed's glass. This prevents paper from slipping into the 'tub'. The operator only have to load the protective film and tub.



The machine on the left is used to oil the rod in the printer consistently. It dispenses a specific amount of oil to ensure even coating. It comes as a pallet based design to cater for many different product.

## Products (Tester)



This is a tester used to measure spring force. It acts as a dummy that replicates a printer part. It has a total of 7 load cells attached to it.



A calibration jig is designed to then calibrate the load cells with weights.



This is a simple measurement jig used to measure control panel. It has the capability to link up to PC and record the result with the touch of a button to eliminate human error when recording results and improving productivity.

## Products (Tester)



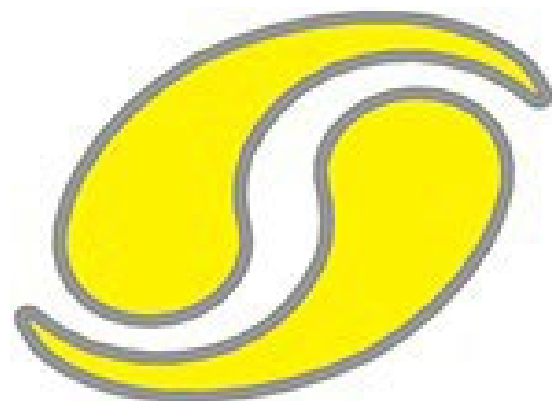
This is a single axis measure jig. A USB microscope is attached to it. It is use to measure the distance of 'x' on label. A value panel is attached to it. It is easy to use and cost effective compared to a smart scope.



Simple and quick check of bracket length (Go or no-go). Flexibility has been considered during engineering by adding a stage, micrometre screw gauge and a dial to cater for quick change of dimension in the event of product change.

# Products (Fixture & Jigs)





# AGTRONZ PTE. LTD.

## Additional Information

- Address: 629 Aljunied Road #06-17 Cititech Industrial  
Singapore 389838
- Website: [www.agtronz.com](http://www.agtronz.com)
- LinkedIn: [www.linkedin.com/company/agtronz/](http://www.linkedin.com/company/agtronz/)

## Contact

- Name: Jayson Seah
- Office: +65 6517 9978
- Number: +65 9137 2488
- Email: [jayson@agtronz.com](mailto:jayson@agtronz.com)